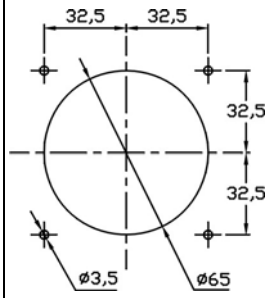
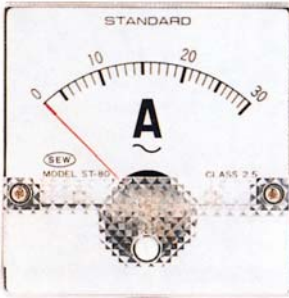




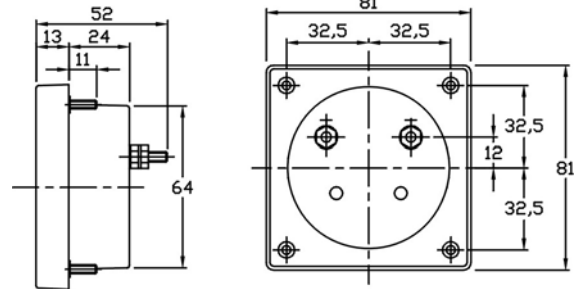
**STANDARD**

**P SERIES**

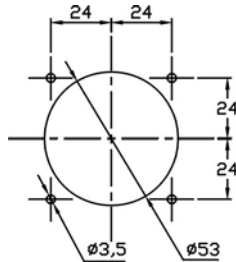
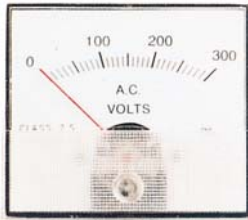
**ST-80**



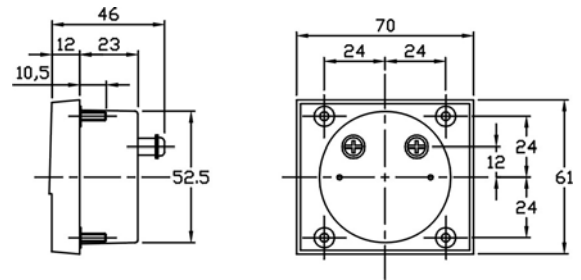
PANEL CUT-OUT



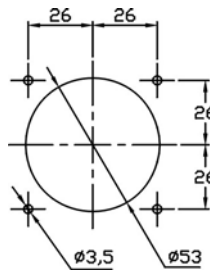
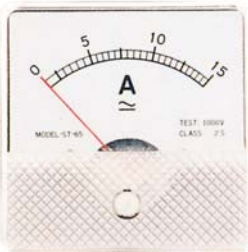
**ST-70P**



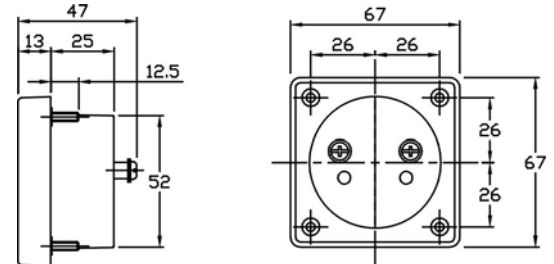
PANEL CUT-OUT



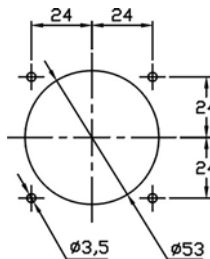
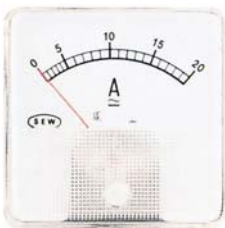
**ST-65**



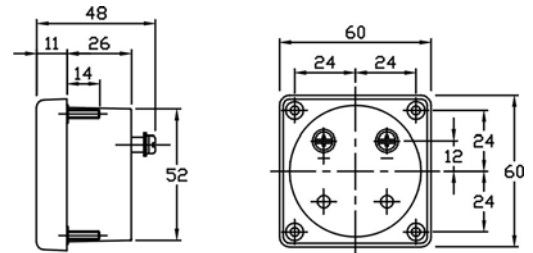
PANEL CUT-OUT



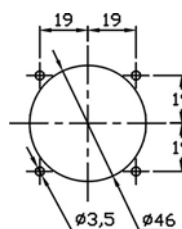
**ST-60**



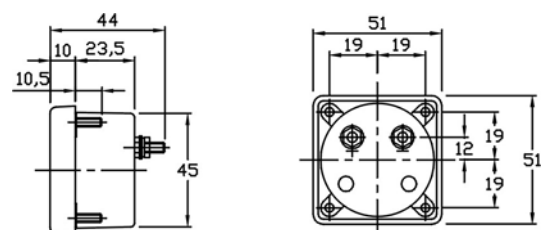
PANEL CUT-OUT



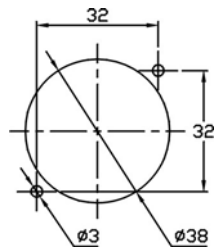
**ST-45**



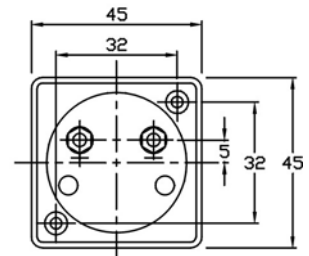
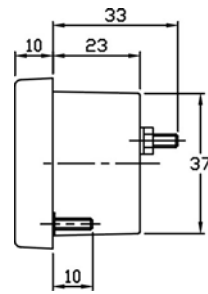
PANEL CUT-OUT



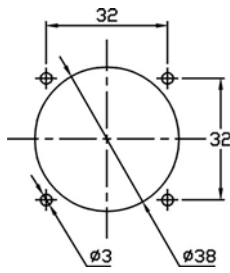
## ST-38



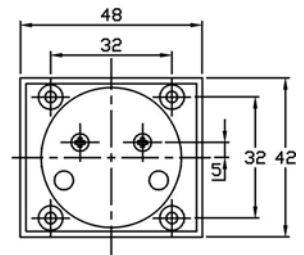
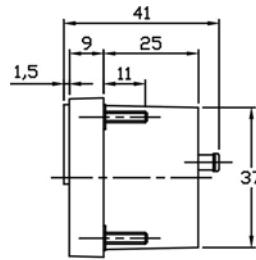
PANEL CUT-OUT



## ST-38N



PANEL CUT-OUT



### Measuring Rages :

#### Moving Coil Type

DC uA	DC mA	DC A	DC mV	DC V
50	1	1	50	3
100	5	5	60	5
150	10	10	100	10
200	15	20	500	15
250	50	30		20
300	100	50		30
500	150			50
800	200			100
	250			150
	300			200
	500			300
	800			500
				600

#### Moving Iron Type

AC mA	AC A	AC V
50	1	150
100	5	250
150	10	300
200	15	500
250	20	
300	30	
500	50	
750		

#### Rectifier Type

AC V
30
50
100
150
200
300
500

DC up to 50A : ST-80

DC up to 30A : ST-65, ST-60, ST-45

DC up to 15A : ST-70P, ST-38, ST-38N

AC up to 50A : ST-80, ST-65

AC up to 30A : ST-70P, ST-60, ST-45

#### H<sub>z</sub> Meter(Only ST-80)

Measuring Ranges : 45~55Hz 45~65Hz

55~65Hz

Rated Voltage : 110V, 220V

Accuracy : Class 2.0

●Case And Composition : Acrylic resin front.

Bakelite case : ST-80, ST-65, ST-45 AC & DC and ST-70P, ST-60 AC

ABS case : ST-70P, ST-60, ST-38, ST-38N DC

Four stud mounting

Two stud mounting for ST-38, ST-38N

●Accuracy :

DC : class 2.0 AC : Class 2.5 Rectifier : Class 2.0

●Color :

Black case and white scale plate.

●Pointer :

Tube type, color in black or red.